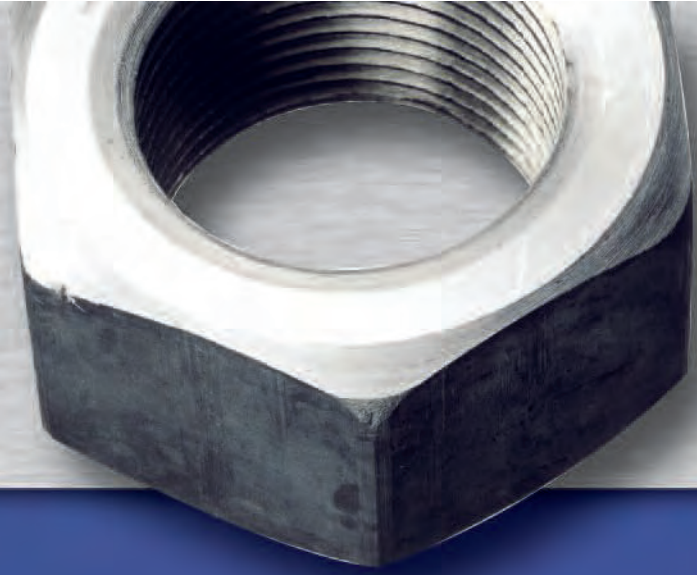




HIGH PRESSURE, HIGH LEVEL



**take a
deep breath...**



Dependable high quality breathing air compressors

**SCUBA & SCBA | FIRE-DEPARTMENTS
INDUSTRY | SHOOTING | PAINTBALL**



SEACOMAIR

HIGH PRESSURE COMPRESSORS

HIGH PRESSURE, HIGH LEVEL

IN THE LEAGUE OF ITS OWN...

SEACOMAIR manufacture a dependable high quality breathing air compressors, designed for continuous duty at an affordable package. Compare SEACOMAIR prices and features with any of the competition. You will find the SEACOMAIR compressors as a high quality, reasonably priced and dependable. Our compressors are widely used by dive centers, fire departments, industrial, marine, police, military services, rescue and commercial untis. Available in a variety of drive units to fit any requirement.

■ Complete range

SEACOMAIR supplies a complete range of high pressure compressors. From portable 2.2 kW compressors with 2.8 cfm-80 l/min charging rate up to 15 kW high capacity compressors systems with 21 cfm-600 l/min charging rate.

■ Highest quality

The high quality of the SEACOMAIR compressors is the result of continuing tests during manufacturing and on the finished products.

■ Special and custom order

We are able to offer a wide range of factory installed options and purifications up-upgrades.

■ Unique comfort

All of our products are designed for reliable performance, easy maintenance, service comfort and maximum energy efficiency.

■ Delivery just in time

Shipping within short time.

■ Service at any time

SEACOMAIR offers service and spare parts supply world wide.

■ Meets all international standards

All SEACOMAIR compressors are built and tested in our factory, have CE certification and complies with all breathing air international standards for Grade "E" and DIN EN12021.

LARGE SELECTION OF HIGH PRESSURE BREATHING AIR COMPRESSORS

Program Model-Number	max. Pressure psi/bar		Approx Output cfm - L/min	Drive Motors (e)Electric (g)Gas (d)Diesel (PH)Phase	Motor Power kw/HP	R.P.M.	Condensate Drain- System man. auto	Dimensions inch/cm			Weight approx. lbs/kg	HP- Hose
	3200/ 220	4700/ 330						L	W	H		
SCA80E21/3Walther	S		2.8/80	(e) 230V/50-60Hz 1PH	2.2/3.0	2240	S ●	27/70	15/38	15/38	93/43	1
SCA80E21/3	S ●		2.8/80	(e) 230V/50-60Hz 1PH	2.2/3.0	2240	S ●	27/70	15/38	15/38	88/40	1
SCA80E11/3	S ●		2.8/80	(e) 110V/60Hz 1PH	2.2/3.0	2240	S ●	27/70	15/38	15/38	88/40	1
SCA100E21/4	S ●		3.5/100	(e) 230V/50-60Hz 1PH	3.0/4.0	2800	S ●	27/70	14/35	15/38	88/40	1
SCA100E43/4	S ●		3.5/100	(e) 400V/50-60Hz 3PH	3.0/4.0	2800	S ●	27/70	14/35	15/38	88/40	1
SCA100DY/6	S ●		3.5/100	(d) Yanmar	4.5/6.0	2800	S ●	42/106	25/62	16/41	165/75	1
SCA100SR/6	S ●		3.5/100	(g) Subaru	4.5/6.0	2800	S ●	27/70	14/35	15/38	86/39	1
SCA100GH/55	S ●		3.5/100	(g) Honda	4.0/5.5	2800	S ●	27/70	14/35	15/38	86/39	1
SCA140E21/4	S ●		5/140	(e) 230V/50-60Hz 1PH	3.0/4.0	860	S ●	39/100	20/50	28/71	242/110	1
SCA140SR/6	S ●		5/140	(g) Subaru	4.5/6.0	875	S ●	44/113	20/50	28/71	242/110	1
SCA215E43/55	S ●		7.5/215	(e) 400V/50-60Hz 3PH	4.0/5.5	1350	S ●	39/100	20/50	28/71	262/119	1
SCA215SR/9	S ●		7.5/215	(g) Subaru	6.6/9.0	1350	S ●	44/113	20/50	28/71	277/126	1
SCA215GH/9	S ●		7.5/215	(g) Honda	6.6/9.0	1350	S ●	44/113	20/50	28/71	277/126	1
SCA215E43/SL-Min	S ●		7.5/215	(e) 400V/50-60Hz 3PH	4.0/5.5	1350	S	28/72	28/72	42/106	412/187	2
SCA265E43/75	S ●		9.0/265	(e) 400V/50-60Hz 3PH	5.5/7.5	1550	S ●	39/100	20/50	28/71	262/119	1
SCA265SR/9	S ●		9.0/265	(g) Subaru	6.6/9.0	1550	S ●	44/113	20/50	28/71	277/126	1
SCA265GH/9	S ●		9.0/265	(g) Honda	6.6/9.0	1550	S ●	44/113	20/50	28/71	277/126	1
SCA265DY/9	S ●		9.0/265	(d) Yanmar	6.6/9.0	1550	S ●	44/113	20/50	28/71	342/155	1
SCA265E43/CFS	S ●		9.0/265	(e) 400V/50-60Hz 3PH	5.5/7.5	1550	S	35/90	24/60	33/85	341/155	2
SCA300E43/CFSF3	S ●		10.5/300	(e) 400V/50-60Hz 3PH	6.6/9.0	1800	S	35/90	24/60	33/85	355/161	2
SCA265E43/VERTIKUS	S ●		9.0/265	(e) 400V/50-60Hz 3PH	5.5/7.5	1550	S ●	24/60	20/50	38/98	277/126	1
SCA265E43/SILENT	S ●		9.0/265	(e) 400V/50-60Hz 3PH	5.5/7.5	1550	S	35/90	34/87	54/137	490/222	2
SCA500E43/HDF-SL	S ●		17.5/500	(e) 400V/50-60Hz 3PH	9.0/12	1100	S	37/94	52/132	66/169	925/420	4
SCA600E43/HDF-SL	S ●		21/600	(e) 400V/50-60Hz 3PH	11.0/15	1300	S	37/94	52/132	66/169	924/420	4
SCA150E43/CNG-SL	S N		5.0/150	(e) 400V/50-60Hz 3PH	4.0/5.5	1300	S N	26/66	28/71	41/104	396/180	1
SCA400E43/CNG-SL	S N		14.0/400	(e) 400V/50-60Hz 3PH	9.0/12	1100	S N	32/82	52/133	70/179	925/420	1

S = standard ● = option N = not available

Specifications subject to change without notice



SCA265E43/CFS

The most compact, fully automatic, stationary, high pressure compressor for all breathing air applications. The fully automatic SCA265E43/CFS with durable powder coated, compact cabinet for quiet operation is used by fire departments, industrial, police and military services. Extremely compact size, in relation to its performance capabilities, make this the best compressor available when space is at a premium.

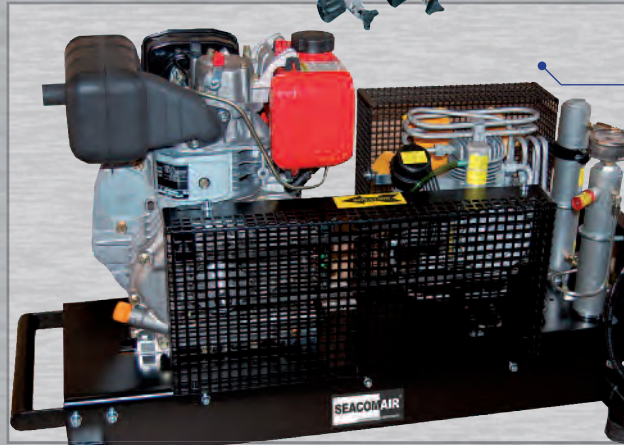


Fire-Departments

SCA265E43/CFS -
Build for fire departments

SCA100DY/6

The most reliable and portable breathing air compressor available today. With 6HP Yanmar Diesel Engine, compact, economical to run and easy to maintain. Charging rate 3.5 cfm / 100 l/min. Ideal for outside location where portability, space and weight are considerations. Can be quickly loaded onto pick-up truck or boat for on-site refilling of SCUBA and SCBA's cylinders.



Diving

SCA100DY/6 -
Ideal for location dives and pleasure boats

SCA80E21/3Walther

Originally designed for Carl Walther Firearms, this commercial adaptation is the preferred choice for a refill airgun station. 2.8 cfm / 80 l/min of compact, portable, pressure air supply will give years of high quality air for your airgun cartridges and cylinders. Compressor with one (1) outlet filling panel for 300bar/4300psi or 220bar /3200psi (Filling adapter FAW300/200 as standard) airgun cartridges.



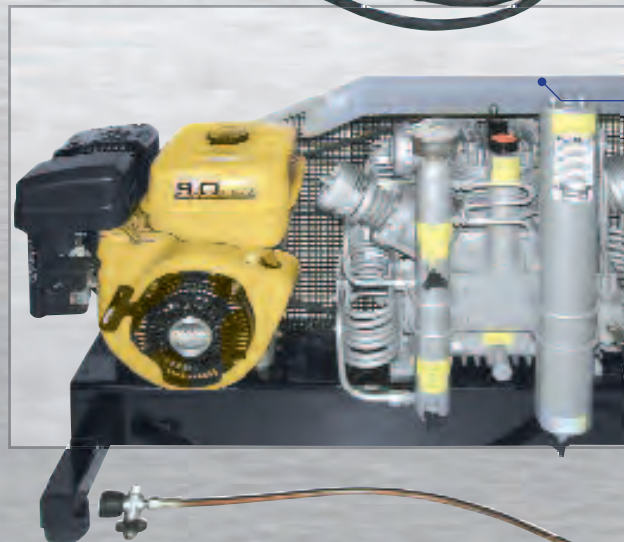
Shooting

SCA80E21/3Walther -
First choice in shooting industry

SCA265SR/9

High pressure breathing air compressor designed for economy and mobility. Charging rate up to 9.0 cfm / 265 l/min of heavy duty design, mounted on a durable powder coated steel frame with tri-chemb breathing air purification system. The SCA265SR/9 for SCUBA, SCBA and used by paintball, marine and fire departments applications.

Precision to the details.
Each compressor with service labels for easy operation.



Paintball

SCA265SR/9 -
Used by paintball fields

SEACOMAIR

LARGE SELECTION

Get more information about
SEACOMAIR compressors at:

www.seacomair.com

DESIGNED SPECIFICALLY FOR COMMERCIAL APPLICATIONS



Industry

SCA600E43/HDF-SL - High capacity breathing air compressor system designed for total efficiency.

The SCA600 is designed specifically for fire departments, dive centers, industrial, marine, police and military applications who demand high volume with safe redundancy. Consisting of two totally independent air systems in one fully enclosed sound attenuated cabinet. The compressor offers 21.0 cfm- 600 l/min available capacity. These unit will give you years of dependable service with factory options as low oil shut down switch and interstage pressure gauges.



PERFECT IN ALL DETAILS



Fit any requirements

We are offering large range of compressors and could build up your compressor the way you would like to have.

Factory Options	SCA80E21/3Walther	SCA80E21/3	SCA80E11/3	SCA100E21/4	SCA100E43/4	SCA100DY/6	SCA100SR/6	SCA100GH/55	SCA140E21/4	SCA140SR/6	SCA215E43/65	SCA215SR/9	SCA215GH/9	SCA215E43/SL-Min	SCA265E43/75	SCA265SR/9	SCA265GH/9	SCA265DY/9	SCA265E43/CFS	SCA300E43/CFSF3	SCA265E43/VERTIKUS	SCA265E43/SILENT	SCA500E43/HDF-SL	SCA600E43/HDF-SL	SCA150E43/CNG-SL	SCA400E43/CNG-SL	
MP330 Compressor Model 300bar/4300psi pressure	S	●	●	●	●	●	●	●	●	●	●	●	●	●	●	●	●	●	●	●	●	●	●	●	●	N	N
MP440 Compressor Model 400bar/5800psi pressure	N	N	N	N	N	N	N	N	N	N	N	N	N	N	N	N	N	N	N	N	N	N	N	●	●	N	N
BZTT100 Hour meter Digital (Gas models only)	N	N	N	N	N	●	●	●	N	●	●	●	●	N	●	●	●	●	●	N	N	N	N	N	N	N	N
HMAE100 Hour meter Analog (Electric models only)	S	●	●	●	●	N	N	N	●	●	●	●	●	●	●	●	●	●	●	S	S	●	S	S	S	S	S
RCH200 Removable carry handles	N	N	N	N	N	N	N	N	●	●	●	●	●	N	●	●	●	●	●	N	N	●	N	N	N	N	N
ASP100 Auto Stop/Shut off pressure switch	N	●	●	●	●	●	●	●	●	●	●	●	●	S	●	●	●	●	●	S	S	●	S	S	S	S	S
PS300/100 Pressure Switch 300-200bar(4300/3000psi)w/MP330	N	●	●	●	●	●	●	●	●	●	●	●	●	●	●	●	●	●	●	N	N	●	●	●	●	N	N
PS400/100 Pressure Switch 400-200bar(5800/3000psi)w/MP400	N	N	N	N	N	N	N	N	N	N	N	N	N	N	N	N	N	N	N	N	N	N	N	N	N	N	N
PS300/CFS Pressure Switch 300-200bar(4300/3000psi)w/MP330	N	N	N	N	N	N	N	N	N	N	N	N	N	N	N	N	N	N	N	●	●	N	●	●	●	N	N
PS300/CFS Pressure Switch 400-200bar(5800/3000psi)w/MP400	N	N	N	N	N	N	N	N	N	N	N	N	N	N	N	N	N	N	N	N	N	N	N	●	●	N	N
PG2010 Interstage Pressure Gauges (3 pcs)	N	N	N	N	N	N	N	N	●	●	●	●	●	●	●	●	●	●	●	●	S	●	S	S	S	N	N
LO2015 Low oil shut down switch	N	N	N	N	N	N	N	N	●	●	●	●	●	●	●	●	●	●	●	●	S	●	S	S	S	N	N
ACD100 Automatic condensate drain	N	●	●	●	●	●	●	●	●	●	●	●	●	S	●	●	●	●	●	S	S	●	S	S	S	N	N
WS100/2 Wheel Set (2 each)	N	●	●	●	●	●	●	●	N	N	N	N	N	N	N	N	N	N	N	N	N	N	N	N	N	N	N
WS200/2 Wheel Set (2 each)	N	N	N	N	N	N	N	N	●	●	●	●	●	N	●	●	●	●	●	N	N	N	N	N	N	N	N
MB12 12V Motor Battery for Electric Start (Gas & Diesel engines)	N	N	N	N	N	●	●	●	N	●	N	●	●	N	●	●	●	●	●	N	N	N	N	N	N	N	N
MES100 Electric Start for Gas & Diesel engines with MB12 only	N	N	N	N	N	●	●	●	N	●	N	●	●	N	●	●	●	●	●	N	N	N	N	N	N	N	N
FAW300/200 Adapter 300>200bar for 200bar/3000psi Cartridges	S	N	N	N	N	N	N	N	N	N	N	N	N	N	N	N	N	N	N	N	N	N	N	N	N	N	N

S = standard ● = option N = not available Specifications subject to change without notice



Tel.: +49/(0)8057/904674
 Fax: +49/(0)8057/904674
 E-Mail: info@seacomair.com
 Internet: www.seacomair.com

LARGE SELECTION
 Get more information about
 SEACOMAIR compressors at:
www.seacomair.com

HIGH PRESSURE, HIGH LEVEL